



15894 HIGHWAY 17
P.O. BOX 56
HAMPSTEAD, NC 28443
910/270-5100 FAX: 910/270-5110

201 N. FRONT STREET • SUITE 602
WILMINGTON, NC 28401
910/251-2211 FAX: 910/251-2218

DOWNTOWN LOTS FOR SALE



722 North 4th Street and 802 North 4th Street

Located in the heart of the revitalized North Fourth Street Corridor and adjacent to the booming northside of Wilmington's Downtown, these two development lots are for sale separately or together. Zoned Central Business District (CBD), these parcels can accommodate both commercial and residential uses.

CALL
JIM QUINN
(910) 251-2211



Commercial & Investment Real Estate Specialists

email: creative@creativeproperties.biz
www.creativeproperties.biz



NORTH 4TH STREET

722

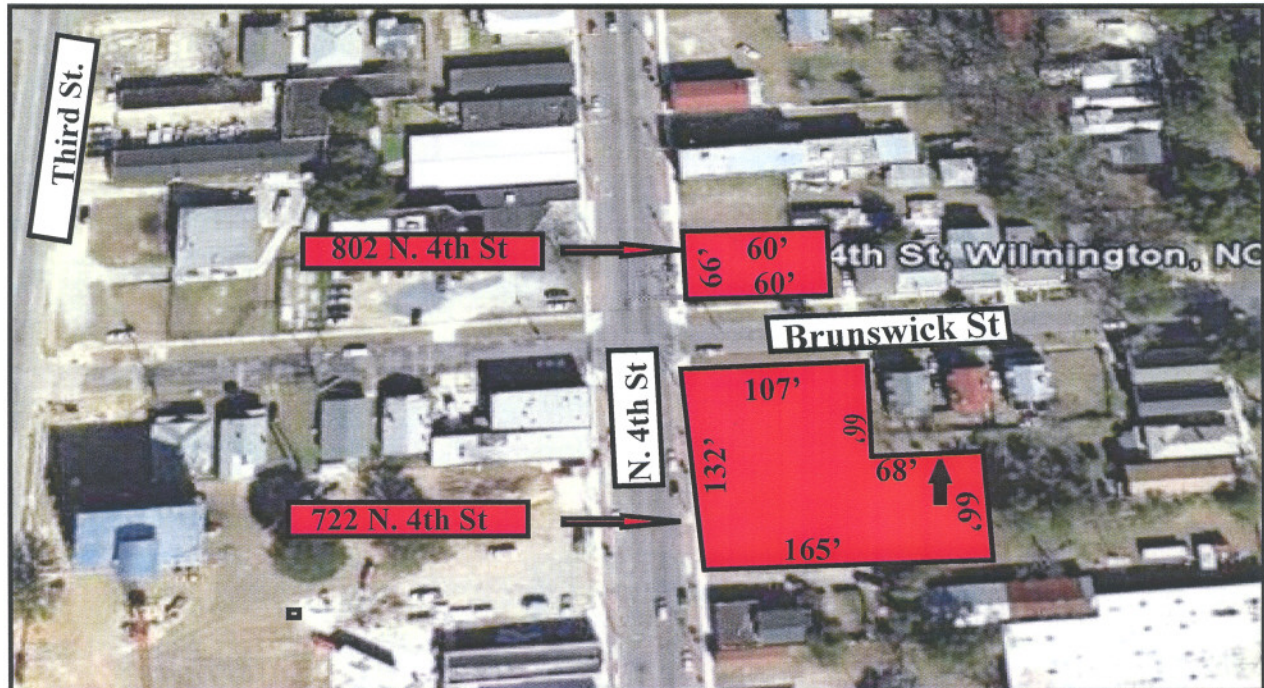
- Southeast Corner of Fourth & Brunswick
- 239' Road Frontage
- Total Area .42 Acre

\$1,295,000

802

- Northeast Corner of Fourth & Brunswick
- 120' Road Frontage
- Total Area 4272 Sq. Ft.

\$295,000



The Location

- Central Business District (CBD) Zoning Permits Residential, Most Commercial and Mixed Use
- North 4th is an Emerging Retail and Residential District
- Two High Rise Condo Developments Across Street
- Municipal Water and Sewer
- 2 Blocks From New PPD Building
- 3 Blocks From the Cape Fear River and the City Convention Center (Under Construction)

CREATIVE PROPERTIES, INC.

www.creativeproperties.biz

Office 910-251-2211
Fax 910-251-2218
Jim@creativeproperties.biz

CALL
JIM QUINN
251-2211

201 N. Front Street
Suite 602
Wilmington, NC 28401



Creative Properties, Inc. reasonably believes the information in this brochure is fairly and accurately stated. However, any prospective purchaser is urged to independently confirm its accuracy and completeness.

