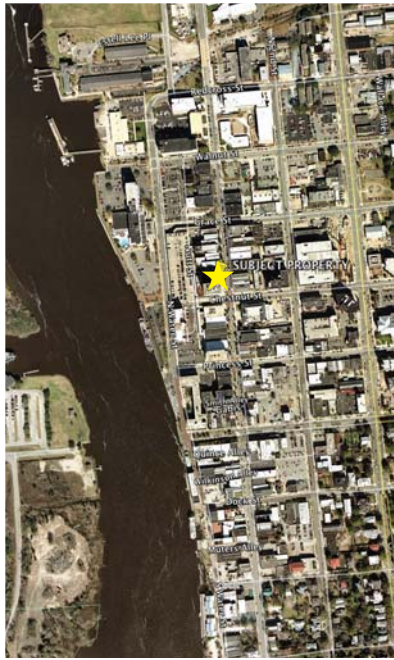
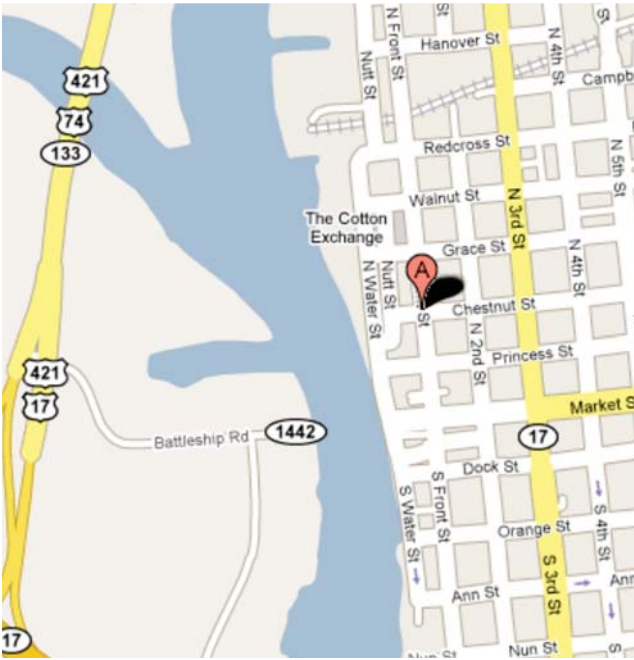


OFFICE AND RETAIL SPACE FOR LEASE

# MURCHISON BUILDING

WILMINGTON, NORTH CAROLINA



## DEMOGRAPHICS & FACTS

**Parking:** Adjacent Parking Deck

**Available Space:** From 125 sf to 2,800

ALL TERMS NEGOTIABLE

**Year Built:** 1914

**Traffic Counts:** 5,500 VPD (2007 Traffic Count)

**GLA:** 60,600

### DRIVE TIME DEMOGRAPHICS

	5 Min.	10 Min.	15 Min.
<b>Population ('08)</b>	18,012	57,399	126,178
<b>Projected ('13)</b>	18,347	60,765	136,379
<b>Avg. Household Inc. ('08)</b>	\$37,694	\$43,364	\$52,157
<b>Median Home Value ('08)</b>	\$135,219	\$148,979	\$181,014

**201 North Front Street • Wilmington, NC 28401**

Located in downtown Wilmington directly across from the main post office, in the heart of the Central Business District near restaurants and shopping. The historic building boasts spectacular panoramic views of downtown and the Cape Fear River.

### MAJOR TENANTS

- Verizon Wireless • Hedgehog Healthcare
- Legal Aid • North State Trust
- Access III of Lower Cape Fear

For information contact: **Tim Norton** • (e) [tnorton@zpi.net](mailto:tnorton@zpi.net) • (p) 843.724.3485  
(f) 843.724.3400 • 200 Wingo Way, Suite 100 • Mount Pleasant, SC 29464 • [www.zpi.net](http://www.zpi.net)

